

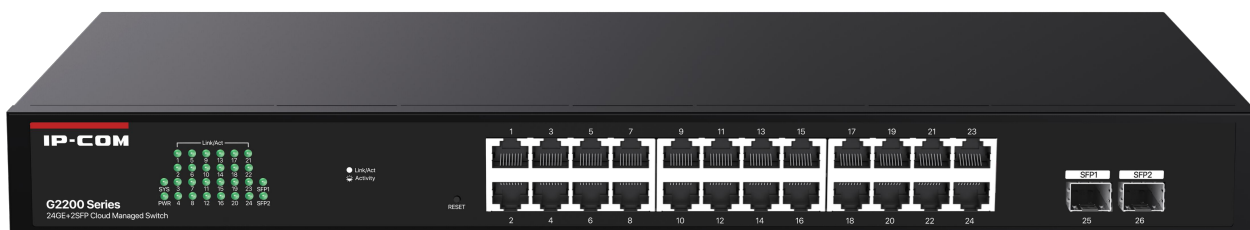
G2226F

24GE+2SFP Cloud Managed Switch

G2226F

24GE+2SFP Cloud Managed Switch

Descriptions



G2226F is a 24-port Gigabit+2SFP intelligent cloud management switch independently designed by IP-COM. It supports cloud WEB platform management and Profi APP management. It can automatically detect loops and private routers and send alarms. Network maintenance is more efficient, after-sales costs are lower, and switches can be configured without leaving home.

Features

- Compliant with IEEE802.3, IEEE802.3u, IEEE802.3ab, IEEE802.3x, IEEE802.3z, IEEE802.1p, IEEE802.1q standards
- 24 × GE+2× SFP
- 8 K MAC address table and MAC address auto learning
- IEEE 802.3x full-duplex flow control and half-duplex backpressure flow control
- 52 Gbps switching fabric for non-blocking line-speed forwarding
- Cloud web UI and ProFi App management
- Support QVLAN, DHCP Snooping, loop protection, etc.

USPs



Cloud Management

The switch can be managed through both the IP-COM Cloud web UI and ProFi App. You can scan the QR codes on the switches to add them in batches for cloud management. The cloud platform will automatically generate a visible network topology for you to view the operation status of each device in a project anytime and anywhere.



Abundant Management Features

The switch offers QVLAN, VLAN transparent transmission, traffic statistics, loop guard, MAC address binding, DHCP Snooping and other functions, suitable for various scenarios of network deployment.



Log alarm

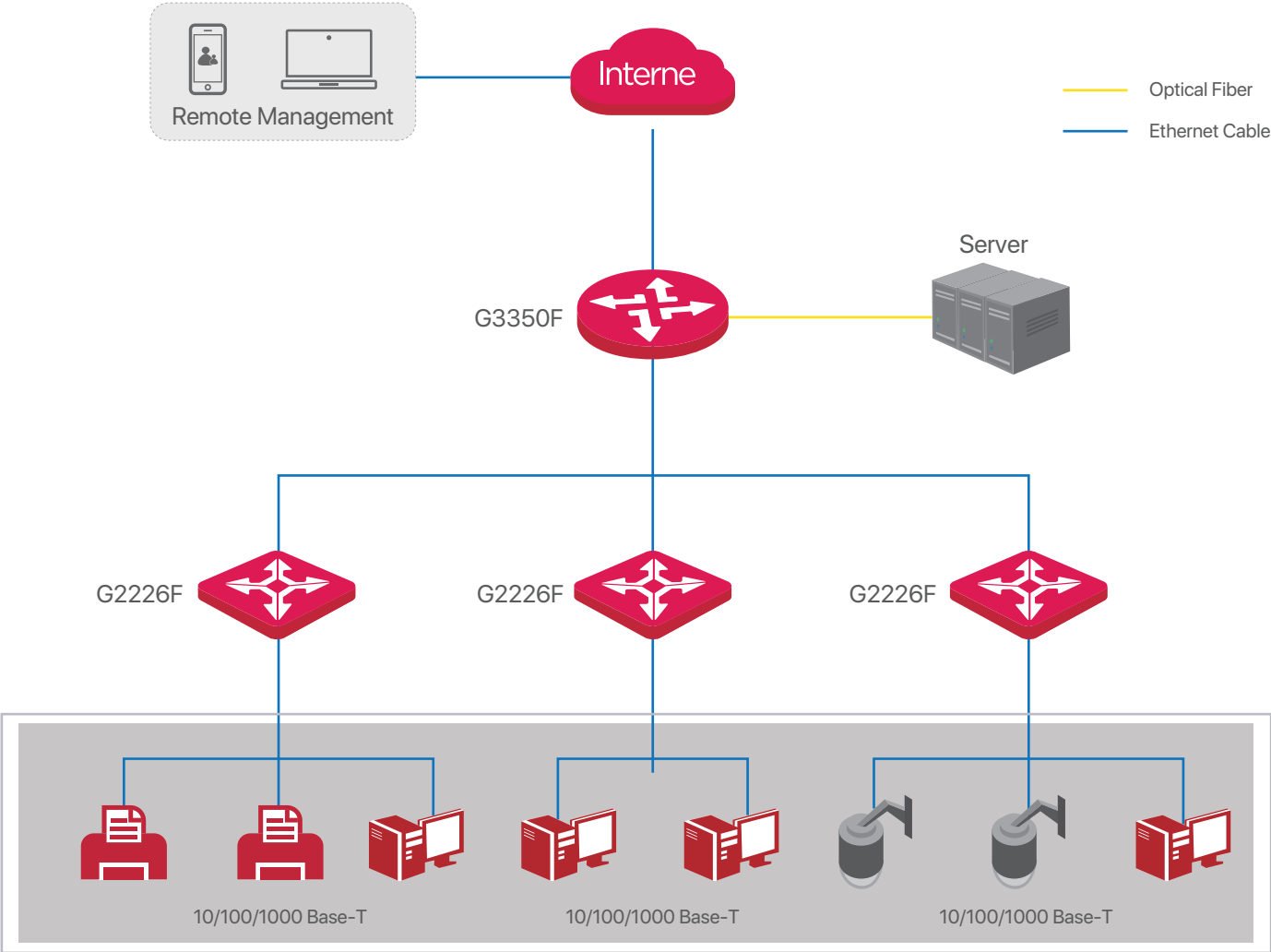
Supports abnormal status protection and real-time alarms such as loops and private routers .



Various installations

Supports desktop, wall-mounted, rack and other installation methods.

Typical Scenario



Specifications

Hardware specifications	
Network standards	IEEE 802.3, IEEE 802.3u, IEEE 802.3ab, IEEE 802.3x, IEEE 802.3z, IEEE 802.1q, IEEE 802.1p
LED indicators	One Link/Act LED indicator for each port One PWR LED indicator for each device One SYS LED indicator for each device
Fixed ports	24×GE+2×SFP
Lightning protection	Port: 6 kV Power supply: 6 kV
Forwarding mode	Store-and-forward
Switching capacity	52 Gbps
Packet forwarding rate	38.7 Mpps
Switching buffer	NA
MAC address table	8 K
Input voltage	100 - 240V~ AC 50/60Hz
Dimensions (L x W x H)	440 mm × 178 mm × 44 mm
Environment	Operating temperature: 0°C - 45°C Storage temperature: -40°C - 70°C Operating humidity: (10% - 90%) RH, non-condensing Storage humidity: (5% - 90%) RH, non-condensing
Certificates	FCC, CE, RoHS

Specifications

Software features	
Security Features	Support whitelist binding of MAC addresses, ports and VLAN Support port isolation
VLAN	Support VLAN transparent transmission Support IEEE 802.1q VLAN
DHCP	Support DHCP Client Support DHCP Snooping
IGMP	Supports IGMP fast leave Supports IGMP Report Suppression
QoS	Support DSCP priority Support SP, SWP, WP
Port Properties	Support port flow control Support port isolation Support N:1 port mirroring Support port statistics of received and transmitted packets, conflict packets and CRC error packets
Rate Limit	Support ingress and egress rate limits on ports
Loop Guard	Support loop detection and guard on each port
Storm Control	Support storm control on ports
Upgrade, Import and Export	Support HTTP upgrade Support configuration import and export
Management and Maintenance	Support ProFi App management Support Cloud web UI management Support local web UI management Support ping test

IP-COM

World Wide Wireless

IP-COM NETWORKS CO., LTD.

Tower E3, No.1001, Zhongshanyuan Road,
Nanshan District, Shenzhen, China. 518052

Service: info@ip-com.com.cn

Inquiry: marketing@ip-com.com.cn

Tel: +86-755-27653089

Specifications are subject to change without notice. Copyright ©2024 IP-COM Networks Co., Ltd. All Rights Reserved. IP-COM is the trademark of IP-COM Networks Co., Ltd. All other brand names mentioned herein are the trademark or registered trademarks of their respective holders.